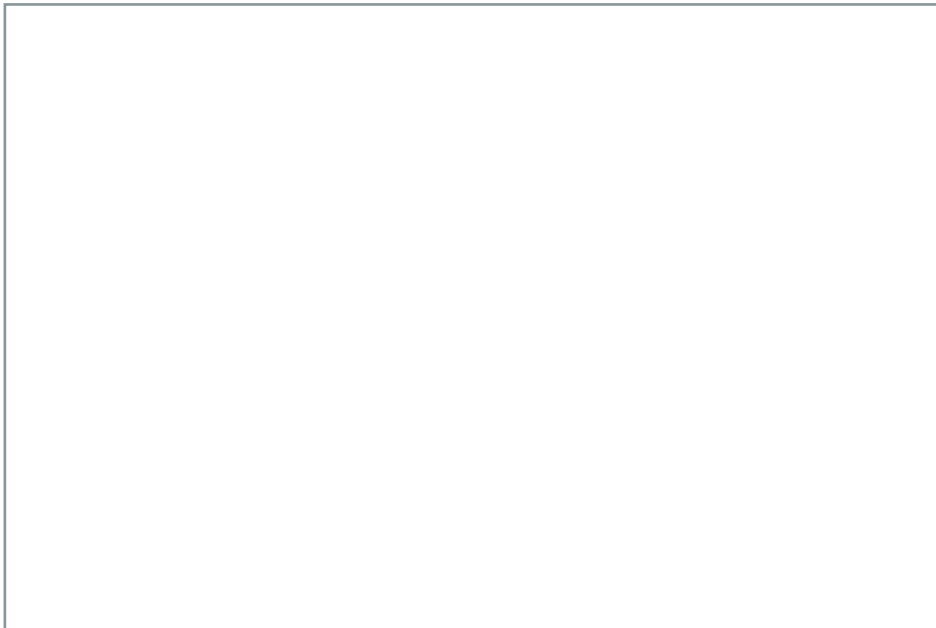




Authorised Distributor



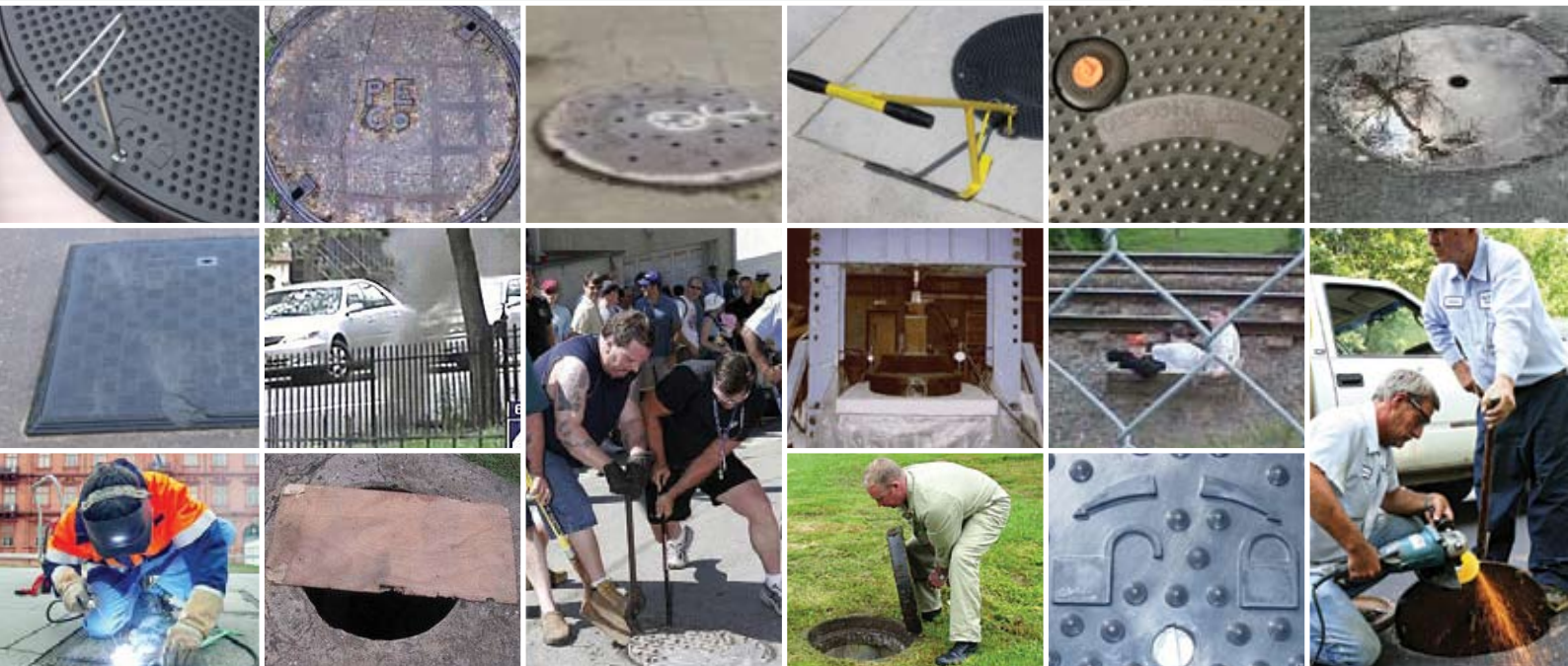
Forecourt Solutions Ltd
Newton Ground
Petherton Road
North Newton
Somerset
TA7 0BD, UK

T: +44 (0) 1278 661 268
F: +44 (0) 1278 661 268
E: info@forecourtsolutionsltd.com
W: www.forecourtsolutionsltd.com
Registered in England & Wales No:5669793
VAT Reg. No: 879 904263



FORECOURT
SOLUTIONS

FORECOURT SOLUTIONS



COST EFFECTIVE COVER SOLUTIONS

Forecourt Solutions

The Compositecovers.com product range is one of the most extensive within the industry. It includes Water Resistant, Water Tight and Modular covers. Our products are supported locally by our committed network of distributors who provide a comprehensive range of support services to ensure peace of mind during your purchase of our composite covers. Whatever your application we will try to find a solution.

Composites are the ideal material from which to produce manhole/access covers and have now been in use for over 15 years. They are the preferred option in a variety of applications from petrol filling stations, water treatment facilities to drainage and telecommunications roadway access covers.

Clients are primarily attracted to composites by the significant weight reduction compared to traditional cast and ductile iron materials. Health and Safety Risk assessments have highlighted such traditional covers to be a major cause of lifting injuries suffered by maintenance operatives.

Additionally composites reduce the risk of theft for scrap as they have no inherent scrap value. This helps avoid potentially dangerous access shafts being left open and unprotected to the general public. Other significant benefits are the ability to produce water and airtight sealed covers, provide non-slip surface finishes and moulding in facilities for locking mechanisms to assist in unauthorised access prevention. Further more composites can be supplied in a variety of colours and will not crack and break and corrode like ductile and cast iron traditional materials.








Selection & Specification

Selection of the correct cover for your application is particularly important. Firstly consider the load bearing requirements of the location where the cover shall be used. There are two principal standards used worldwide that may apply within your market, the European standard EN 124:2004 and the American standard DOT H20.

The US H20 standard comes from "Standard Specifications for Highways and Bridges" published by the American Association of State Highway and Transportation Officials (AASHTO). This specification defines the H20 loading condition as a two axle load is 32000 lbs. or 16000 lbs. (14.515 tonnes or 7.257 tonnes) for each set of dual wheels. In addition AASHTO recommends that these loads be increased by an impact factor of 1.3.

The European EN124 however has a series of load classifications based upon the intended application for the manhole cover. See right;

Classification	EN124 Class	Gross Laden Vehicle Weight	Wheel Loads Slow moving pneumatic	Typical Applications
	A15	Pedestrian Duty	0.6 tonne (5kN)	Internal & external areas which can only be used by pedestrians or cycles i.e Toilets, changing rooms, footways & cycle tracks
	B125	Up to 44 Tonnes but under special conditions *1	5.0 tonne (50kN)	Pedestrian Precincts, forecourts, commercial delivery/parking areas
	C250	Up to 44 Tonnes but under special conditions *1	6.5 tonnes (65kN)	Factories, industrial plants, special axle loads, kerb side drainage
	D400	Up to 44 Tonnes but under special conditions *1	11 tonnes (108kN)	Heavy duty plant areas carriageways & industrial service roads where fast moving HGV's reach speeds of 20mph (30kmph) max
	E600	Special application vehicles	16 tonnes (158kN)	Dockside & container storage areas where heavy transporters operate

*1 - Under the UK "Road vehicles (Authorised Weight) Regulations 1998" Axle weights are limited to 11.5 tonnes maximum.

Product Range

Our extensive range shares many of the same features;

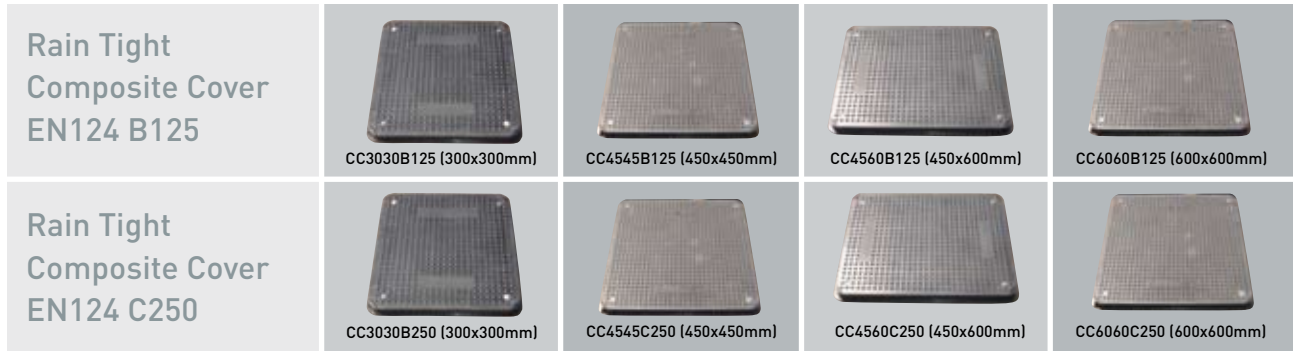
- Lightweight to reduce lifting injury's
- Non-Slip surface finish
- Will not corrode
- Flush installation no trip hazard
- Lockable to prevent unauthorised access

- Reduced traffic movement noise
- Black finish standard – Colour options
- High security options - Stabiloc®
- Non-Sparking
- Rain proof or Watertight
- Comprehensive warranty
- Easy open

The range is divided into three main types;

Rain Tight Covers

These covers are suitable for either B125 or C250 load applications where water tightness is not essential. Typical applications are underground junction boxes, draw pits, traffic signals and telecoms. Where purchase volumes permit covers can be supplied with clients name and application data permanently moulded into the surface of the cover. Covers are generally secured with stainless bolts.



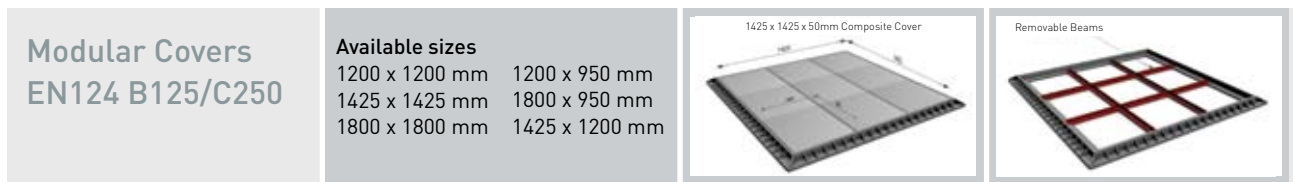
Water Tight Covers

Primarily designed with petroleum filling stations in mind, these watertight covers enhance the fuel tight pavement on any site. Specified to EN124 C250 to exceed the requirements of the most demanding Heavy Goods Vehicle lanes. Covers are supplied as standard with Turnbuckle security bolts however units can be supplied with more secure options if require on unmanned or high risk locations.



Modular Covers

Large single span covers become unwieldy and hugely expensive for lighter duty large area cover applications such as those found in water treatment plants and industrial complexes. Modular covers provide a cost effective alternative whilst still maintaining easy access to the underground infrastructure. Forecourt Solutions provides a range of sizes utilising standard composite cover building blocks.



Stabiloc

Stabiloc® is a unique high security locking system for manhole/access covers. It is suitable for use with both new and existing installations. Ideally suited for high risk facilities such as Governmental buildings, banks, prisons, embassies, military establishments, nuclear power facilities, railway signalling systems and more. In fact it can be used in any application where unauthorised access to the underground infrastructure is not desired. Simple to retrofit and easy to maintain, the level of ongoing security can be designed to suit your application. Ask your supplier for case studies of some of the applications where Stabiloc® is already installed.

