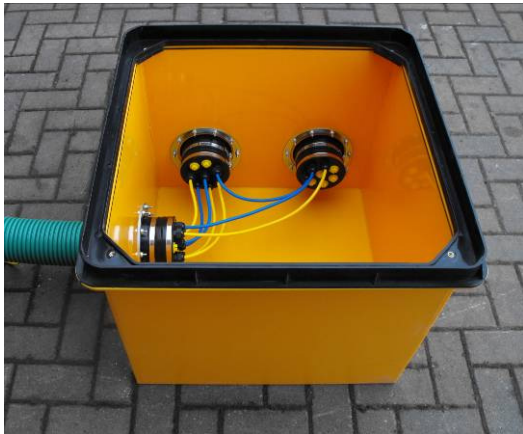




## ChamberTite Draw Pit Chambers

Forecourt Solutions are pleased to announce the addition of Draw Pits and Access Chambers to the ever growing ChamberTite range of products. The ChamberTite range of DrawPits is available in a range of sizes to suit most applications and to make even the most difficult projects easy. Each pit comprises of a polyethylene chamber interfaced to manhole cover frame and suitably rated manhole cover. We can also offer a custom design service to suit any application should one of our standard products not be ideal for your requirements.



Electrical Draw Pits



Pipe & Cable Entry Boots

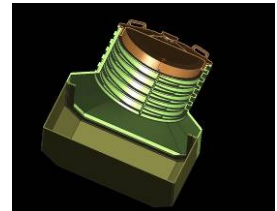


Flexible Hose Assemblies

Large chambers can be fitted with our modular range of manhole covers enabling a huge range of sizes to be achieved on short lead times. Common chamber sizes of 450 and 600 mm will usually be held in stock to meet urgent requirements however special sizes and larger quantities will be manufactured to order. Please contact us to enable us to quote your exact requirements.

### Features and Benefits

- Cost effective off the shelf solutions
- High quality polyethylene chamber rectangular or circular
- Complete boxes or open based options
- Options for equipment fixing and mounting points.
- Watertight options
- Chambers can be divided into sections if required
- Composite manhole covers with security options if required
- Range of load ratings available from A15 to D400
- Quick to install
- Colours to suit customer requirements
- Suitable for direct burial without the need for concrete shuttering
- Pipe and duct entries can be simply cut on site and sealed by our own comprehensive range of conduit and duct seals (available off the shelf)
- Non slip covers can be customised to customer requirements
- Range of locks and security devices to prevent unauthorized entry to installed chambers.



Tank & Dispenser Sumps



Forecourt Manhole Covers

### Applications

The number of applications for these chambers is almost limitless. We have already supplied such chambers to the following applications; Airfields, Hospitals, Power Stations, Perimeter Lighting Systems, Fibre Optic Cable Installations, CCTV installations, Petrol Filling Stations, Oil Distribution Terminals, IT Installations in Schools, Road Signs, Solar Power Battery Enclosures, Gas Regulation Equipment, Low Voltage Lighting Plant, Outside Exhibition Stand Wiring, Universities and Electricity Distribution Sub Stations.. As you can see the range of applications is almost endless but whatever the application we provide a chamber to suit.



Covers Lift Sticks



Forecourt Solutions Ltd  
Unit F, Thistle Park  
Crossways Road  
Showground Business Park  
Bridgwater, Somerset  
TA6 6LS, UK.

T: +44 (0) 1278 42 88 33  
F: +44 (0) 1278 45 98 08  
E: Info@forecourtsolutionsltd.com  
W: www.forecourtsolutionsltd.com  
Registered in England & Wales No 5669793  
VAT Reg No: 879 904263

