



Composite Manhole Covers

Forecourt's New Generation Covers

Lightweight High Strength Watertight Composite Covers and Frames

The all new 900mm and 750mm Composite Covers designed and manufactured by Forecourt Solutions now include the following additional features;

- DirtStop Seal
- ¼ Turn Bayonet Locks
- Hex non slip surface
- Cover located Watertight Seal
- Anti Rotation Frame
- Dual Lift Points

Forecourt Solutions Composite Covers range of lightweight high strength manhole covers sees the arrival of its two newest covers. First to be introduced are a 900 mm circular and 750 mm square. These will shortly be joined by other sizes to enhance the range. Each cover within the range will feature our new HEX non-slip pattern and a range of security features to prevent theft from your underground infrastructure. Covers, frames and optional installation skirts will be made from composite high strength material to provide market leading functionality. These units will feature Forecourt's unique DirtStop seal technology to prevent the ingress of dust and debris into the sealing face of the manhole cover and are further fitted with quality watertight compression seals. Particular attention has been given in the design process to eliminate the effect of "cover lock" due to temperature variation when frames are installed into large slabs of concrete without expansion joints.



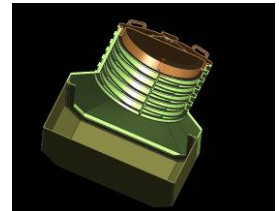
Electrical Draw Pits



Pipe & Cable Entry Boots



Flexible Hose Assemblies



Tank & Dispenser Sumps



Forecourt Manhole Covers



Covers Lift Sticks



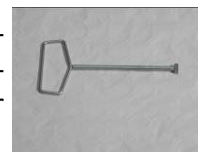
Tested and certified to EN124 Pas26 D400 Permanent Set Load Test requirements. Copies available upon request.

As with all Forecourt products customers will benefit from high quality yet excellent affordability.

The full range of covers will be stocked in our European warehouse to ensure immediate availability. Pipework installers will find the 900 mm circular cover is designed to be fully compatible with our new watertight Tank Sump CTS1150-1150. If future demand requires we will also look to provide a square riser tank sump to suit the 750 mm square cover.



Each cover comes complete with a full function lifting and locking key LWT-1000 however if preferred the covers are also compatible with our best selling SwiftLift SWL-1000 manhole cover lifting tool.



Forecourt Solutions Ltd
 Unit F, Thistle Park,
 Crossways Road,
 Showground Business Park
 Bridgwater, Somerset,
 TA6 6LS, UK.

T: +44 (0) 1278 42 88 33
 F: +44 (0) 1278 45 98 08
 E: Info@forecourtsolutionsltd.com
 W: www.forecourtsolutionsltd.com
 Registered in England & Wales No 5669793
 VAT Reg. No: 879 904263

