

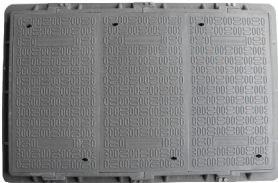
# ChamberTite Electrical Draw Pit



Forecourt Solutions are pleased to announce the addition of Draw Pits and Access Chambers to the ever growing ChamberTite range of products.

The ChamberTite range of DrawPits is available in a range of sizes to suit most applications and to make even the most difficult projects easy. Each pit comprises of a polyethylene chamber interfaced to manhole cover frame and suitably rated manhole cover. We can also offer a custom design service to suit any application should one of our standard products not be ideal for your requirements.

Large chambers can be fitted with our modular range of manhole covers enabling a huge range of sizes to be achieved on short lead times.



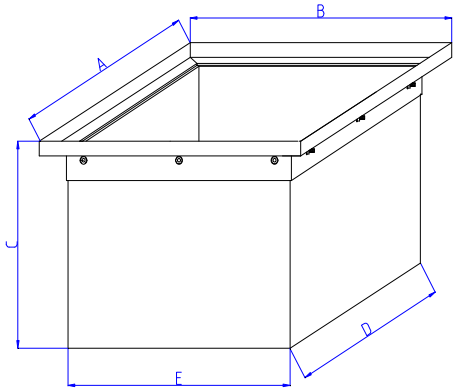
Chambers can be divided in sections to allow single chambers to be used for more than one cabling solution.

Common chamber sizes of 450 and 600 mm will usually be held in stock to meet urgent requirements however special sizes and larger quantities will be manufactured to order. Please contact us to enable us to quote your exact requirements.

## Features and Benefits

- Cost effective off the shelf solutions
- High quality polyethylene chamber rectangular or circular
- Complete boxes or open based options
- Options for equipment fixing and mounting points.
- Watertight options
- Chambers can be divided into sections if required
- Composite manhole covers with security options if required
- Range of load ratings available from A15 to D400
- Quick to install
- Colours to suit customer requirements
- Suitable for direct burial without the need for concrete shuttering
- Pipe and duct entries can be simply cut on site and sealed by our own comprehensive range of conduit and duct seals (available off the shelf)
- Non slip covers can be customised to customer requirements
- Range of locks and security devices to prevent unauthorized entry to installed chambers.

## Dimensions



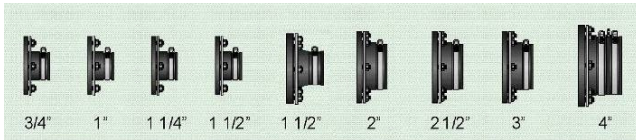
Draw Pit No	DPC492-492-500	DPC652-652-510	Custom Design
Dimension A	654 mm	768 mm	Specify
Dimension B	654 mm	768 mm	Specify
Dimension C	538 mm	548 mm	Specify
Dimension D	492 mm	652 mm	Specify
Dimension E	492 mm	652 mm	Specify
All dimensions are approximate			

# ChamberTite Electrical Draw Pit

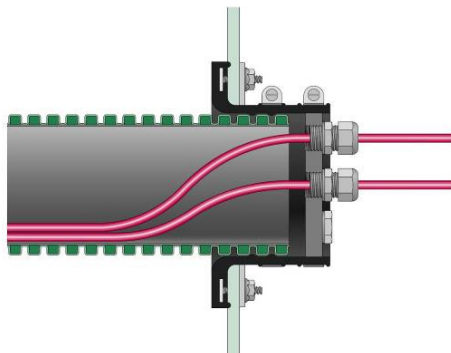
When specifying a chamber you will also need to consider the load bearing requirements of the finished chamber and any requirements for water tightness. Forecourt Solutions can provide a range of covers to suit most applications in lightweight high strength composite or traditional cast iron and fabricated steel.



We can also provide a range of entry seals to facilitate your connections into and out of the chamber.



These watertight seals are easily site installed into the walls/base of the chamber to suit your design and are available in a range of sizes to suit your pipe, duct and cable entry requirements. Our ChamberTite Cable Entry Bulkhead provides a watertight barrier for single and twin wall duct entries into chambers



ChamberTite Duct Boot with Cable Entry Bulkhead

Forecourt Solutions Ltd  
Newton Ground  
Petherton Road  
North Newton  
Somerset  
TA7 0BD, UK

T: +44 (0) 1278 661 268  
F: +44 (0) 1278 661 268  
E: [info@forecourtsolutionsltd.com](mailto:info@forecourtsolutionsltd.com)  
W: [www.forecourtsolutionsltd.com](http://www.forecourtsolutionsltd.com)  
Registered in England & Wales No:5669793  
VAT Reg. No: 879 904263

## Below Ground Battery Boxes



For applications where covers do not need to be load bearing we can provide sealed polyethylene tops for chambers. These units are ideal for chambers which are to be entirely buried following installation for use as battery boxes for solar powered road signs or similar applications. Entry requirements to the chambers maybe facilitated with duct and pipe entry seals.

Should you have a special requirement please contact us we are usually able to adapt or fabricate an existing product to meet your requirements.

## Lifting & Security

We are able to provide a range of security devices to protect your underground infrastructure.



Security Scroll Bolts or 1/4 Turn bayonet Pins



Lifting and locking Keys or assisted LiftStick

